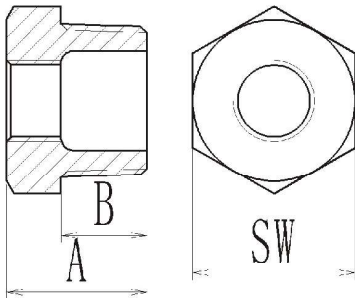


00B113N Series - Hexagon Bushing



Size	Part No.		Dimension(in)			Weight
	In	304	316	A	B	
1/4*1/8	400B113N014018	600B113N014018	0.882 ± 0.016	0.669 ± 0.016	0.681 ± 0.039	0.03
3/8*1/8	400B113N038018	600B113N038018	0.909 ± 0.016	0.689 ± 0.016	0.870 ± 0.039	0.06
3/8*1/4	400B113N038014	600B113N038014	0.909 ± 0.016	0.689 ± 0.016	0.831 ± 0.039	0.06
1/2*1/8	400B113N012018	600B113N012018	0.980 ± 0.016	0.791 ± 0.016	1.000 ± 0.039	0.09
1/2*1/4	400B113N012014	600B113N012014	0.980 ± 0.016	0.791 ± 0.016	1.000 ± 0.039	0.09
1/2*3/8	400B113N012038	600B113N012038	0.980 ± 0.016	0.791 ± 0.016	1.000 ± 0.039	0.08
3/4*1/8	400B113N034018	600B113N034018	1.012 ± 0.020	0.791 ± 0.020	1.220 ± 0.039	0.16
3/4*1/4	400B113N034014	600B113N034014	1.012 ± 0.020	0.791 ± 0.020	1.201 ± 0.039	0.15
3/4*3/8	400B113N034038	600B113N034038	1.012 ± 0.020	0.791 ± 0.020	1.240 ± 0.039	0.15
3/4*1/2	400B113N034012	400B113N034012	1.012 ± 0.020	0.791 ± 0.020	1.220 ± 0.039	0.13
1*1/8	400B113N010018	400B113N010018	1.280 ± 0.024	1.020 ± 0.024	1.500 ± 0.039	0.27
1*1/4	400B113N010014	600B113N010014	1.280 ± 0.024	1.000 ± 0.024	1.500 ± 0.039	0.25
1*3/8	400B113N010038	600B113N010038	1.280 ± 0.024	1.000 ± 0.024	1.500 ± 0.039	0.24
1*1/2	400B113N010012	600B113N010012	1.280 ± 0.024	1.000 ± 0.024	1.500 ± 0.039	0.22
1*3/4	400B113N010034	600B113N010034	1.280 ± 0.024	1.000 ± 0.024	1.500 ± 0.039	0.20
1 1/4*1/8	400B113N114018	600B113N114018	1.319 ± 0.024	1.000 ± 0.024	1.791 ± 0.039	0.35
1 1/4*1/4	400B113N114014	600B113N114014	1.299 ± 0.024	1.000 ± 0.024	1.791 ± 0.039	0.36
1 1/4*3/8	400B113N114038	600B113N114038	1.319 ± 0.024	1.000 ± 0.024	1.791 ± 0.039	0.35
1 1/4*1/2	400B113N114012	600B113N114012	1.319 ± 0.024	1.000 ± 0.024	1.791 ± 0.039	0.34
1 1/4*3/4	400B113N114034	600B113N114034	1.299 ± 0.024	1.000 ± 0.024	1.791 ± 0.039	0.31
1 1/4*1	400B113N114010	600B113N114010	1.299 ± 0.024	1.000 ± 0.024	1.791 ± 0.039	0.28
1 1/2*1/4	400B113N112014	600B113N112038	1.339 ± 0.024	1.000 ± 0.024	2.039 ± 0.039	0.52
1 1/2*3/8	400B113N112038	600B113N112038	1.382 ± 0.024	1.000 ± 0.024	2.039 ± 0.039	0.53
1 1/2*1/2	400B113N112012	600B113N112012	1.382 ± 0.024	1.000 ± 0.024	2.039 ± 0.039	0.51
1 1/2*3/4	400B113N112034	600B113N112034	1.382 ± 0.024	1.000 ± 0.024	2.039 ± 0.039	0.49
1 1/2*1	400B113N112010	600B113N112010	1.358 ± 0.024	0.980 ± 0.024	2.039 ± 0.039	0.45
1 1/2*1 1/4	400B113N112114	600B113N112114	1.382 ± 0.024	1.000 ± 0.024	2.039 ± 0.039	0.34
2*1/4	400B113N020014	600B113N020014	1.402 ± 0.031	1.000 ± 0.031	2.461 ± 0.039	0.77
2*3/8	400B113N020038	600B113N020038	1.402 ± 0.031	0.961 ± 0.031	2.461 ± 0.039	0.83
2*1/2	400B113N020012	600B113N020012	1.402 ± 0.031	0.980 ± 0.031	2.461 ± 0.039	0.77
2*3/4	400B111N020034	600B111N020034	1.402 ± 0.031	1.000 ± 0.031	2.461 ± 0.039	0.75
2*1	400B113N020010	600B113N020010	1.402 ± 0.031	1.000 ± 0.031	2.461 ± 0.039	0.77
2*1 1/4	400B113N020114	600B113N020114	1.402 ± 0.031	0.980 ± 0.031	2.461 ± 0.039	0.72
2*1 1/2	400B113N020112	600B113N020112	1.402 ± 0.031	0.980 ± 0.031	2.461 ± 0.039	0.59
2 1/2*1/2	400B113N212012	600B113N212012	1.909 ± 0.039	1.461 ± 0.039	3.169 ± 0.039	1.25
2 1/2*3/4	400B113N212034	600B113N212034	1.909 ± 0.039	1.461 ± 0.039	3.169 ± 0.039	1.32
2 1/2*1	400B113N212010	600B113N212010	1.909 ± 0.039	1.461 ± 0.039	3.150 ± 0.039	1.32
2 1/2*1 1/4	400B113N212114	600B113N212114	1.909 ± 0.039	1.480 ± 0.039	3.150 ± 0.039	1.41
2 1/2*1 1/2	400B113N212112	600B113N212112	1.870 ± 0.039	1.461 ± 0.039	3.150 ± 0.039	1.19
2 1/2*2	400B113N212020	600B113N212020	1.909 ± 0.039	1.461 ± 0.039	3.150 ± 0.039	0.99
3*3/4	400B113N030034	600B113N030034	1.969 ± 0.039	1.461 ± 0.039	3.760 ± 0.039	2.07
3*1	400B113N030010	600B113N030010	1.909 ± 0.039	1.461 ± 0.039	3.720 ± 0.039	2.17
3*1 1/4	400B113N030114	600B113N030114	1.949 ± 0.039	1.461 ± 0.039	3.720 ± 0.039	2.20
3*1 1/2	400B113N030112	600B113N030112	1.909 ± 0.039	1.461 ± 0.039	3.760 ± 0.039	2.10
3*2	400B113N030002	600B113N030020	1.909 ± 0.039	1.461 ± 0.039	3.760 ± 0.039	1.89
3*2 1/2	400B113N030212	600B113N030212	1.929 ± 0.039	1.441 ± 0.039	3.740 ± 0.039	1.60
4*1	400B113N040010	400B113N040010	2.000 ± 0.039	1.461 ± 0.039	4.740 ± 0.039	3.63
4*1 1/4	400B113N040114	600B113N040114	2.000 ± 0.039	1.461 ± 0.039	4.740 ± 0.039	3.65
4*1 1/2	400B113N040112	600B113N040112	2.000 ± 0.039	1.461 ± 0.039	4.740 ± 0.039	3.68
4*2	400B113N040020	600B113N040020	2.000 ± 0.039	1.461 ± 0.039	4.740 ± 0.039	3.51
4*2 1/2	400B113N040212	600B113N040212	2.000 ± 0.039	1.461 ± 0.039	4.740 ± 0.039	3.43
4*3	400B113N040030	600B113N040030	2.000 ± 0.039	1.461 ± 0.039	4.760 ± 0.039	2.82

Dimensional tolerances are as per ISO 8062-3:2007 CT7 (for Castings) and ISO 2768-1:1989/M (for Machining)